

LEI Treasure Hunt - 21 July 2009

Results

Position	Name	Club	Raw Score	Final Score
1	Liz Phillips and Bruce Bryant	OD	380	248
2	Bob Haskins	LEI	210	230
3	Ian, Barbara and Euan Tebbutt *	LEI	320	195
4	Mike Gardner	DVO	170	190
5	James and Peter Hornsby	LEI	280	188
6	Mark Spendlove	DVO	180	180
7	Alastair Paterson	LEI	160	180
8	John Marriott	LEI	150	170
9	Kim Buxton	DVO	140	160
10	Ross Buxton	DVO	160	160
11	James Gath	LEI	140	160
12	Simon Ford	LEI	130	150
13	Mark and Gabriel Rawlinson	LEI	160	148
14	Ben Windsor	LEI	110	130
15	Ursula and Roger Williamson	LEI	110	130
16	Roger Edwards	LEI	110	130
17	Elaine Hodkin and Chris Dunne	LEI	140	104
18	Mark Foxwell and David Toach	LEI	130	98
19	Ruth Ford, Sam Ford, Becky Ford and Jeanne Brooks		170	71

Notes

*The only team to get the question correct: 'Name four famous called George?' 30 points awarded prior to team % reduction.

Most teams received the 20 point bonus for their team name.

% team reduction were adjusted for those with young children in the team.

Competitors starting earliest when the rain was heavier were at a disadvantage. No adjustment has been made for this.

LEI Treasure Hunt 21 - July 2009

Course: 60 control points which can be visited in any order. You must match each control point to a picture.

Time allowed: 90 mins

Map/scale: OS 1:25,000

Materials: Score sheet; Map; 3 pages of pictures (none are waterproof, so you may need a bag)

Scoring

Per control: 10 points per control. Some controls count double or triple (see picture sheet).

Transport point reduction: 100% on foot; 80% for cycles; 60% for cars

Teams point reduction: 60% for 2 members; 40% for 3 members; 30% for 4 members

Bonus points: for getting the quiz question correct and for a creative team name

Time Penalties: > 90 mins: 95%; >100 mins: 90%; >110mins: 75%; > 120mins; 50%

Notes:

- ❖ Each photo is of a feature at the centre of the control circle, or is an aerial photo of the site, or is a view from the circle centre.
- ❖ There is an extensive network of public footpaths in this area. Some have become overgrown (nettles and brambles) in the last month, since the photos were taken.
- ❖ Domestic gardens have in places enclosed fields but the footpaths through them are still public.
- ❖ The bulls (imaginary or real) are friendly.
- ❖ Beware of crossing roads as traffic on some roads can be much faster than others.
- ❖ All car teams must have more than one member (a passenger must navigate)
- ❖ Remember to keep to footpaths, shut gates behind you and don't antagonise landowners

A



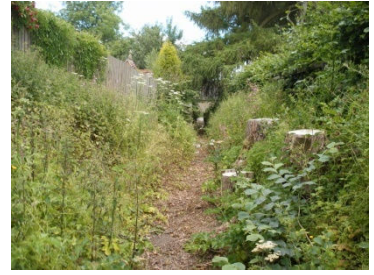
B x3



C x3



D



E



F



G



H



I



J



K x3



L



M



N



O



P x2



Q



R



S



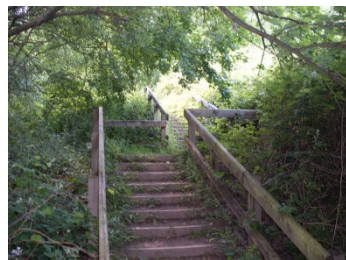
T



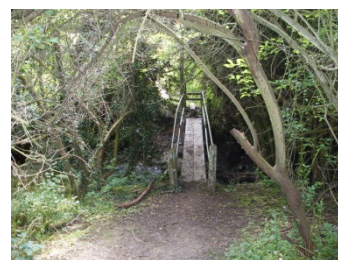
U



V



W



X



Y



Z x 2



AA



BB



CC



DD



EE x 2



FF



GG



HH x 2



II



JJ



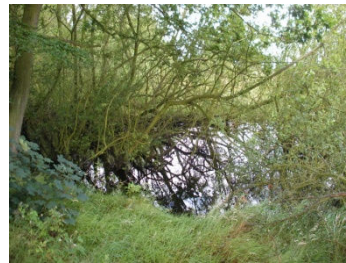
KK



LL



MM x 2



NN



OO



PP x 3



QQ x 2



RR



SS x 2



TT x 2



UU



VV



WW x 3



XX



YY



ZZ



AAA



BBB x 3



CCC x 2



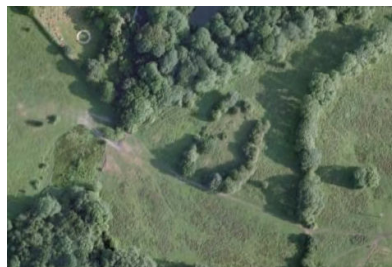
DDD



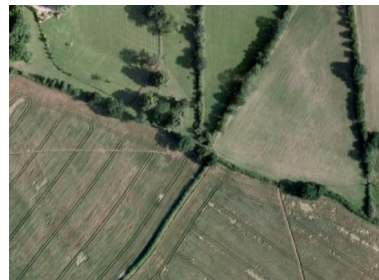
EEE x 2



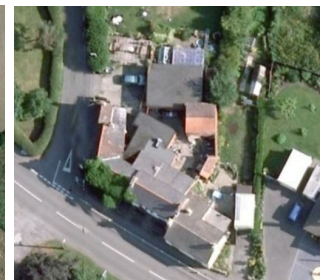
FFF x 2



GGG



HHH



The answer to the quiz question is: Eddy the third best boy